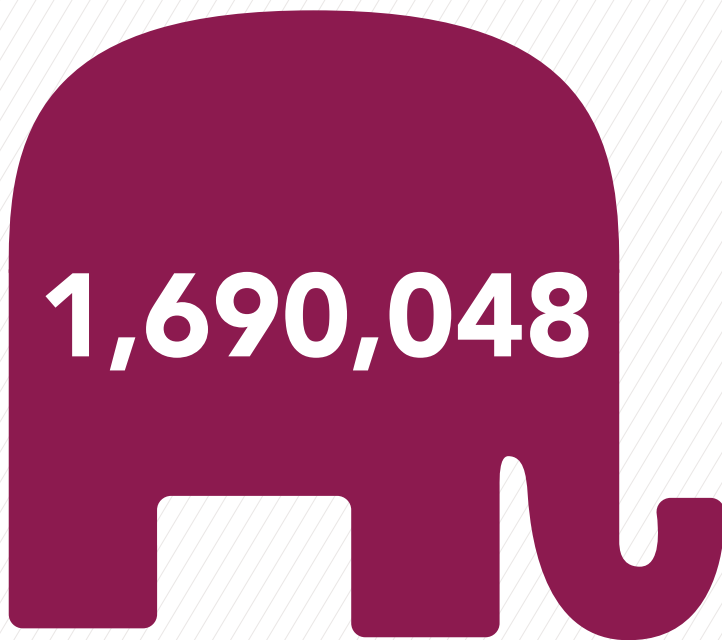
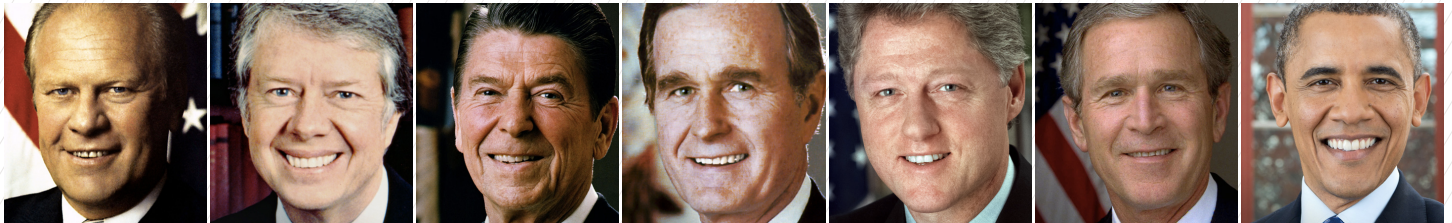
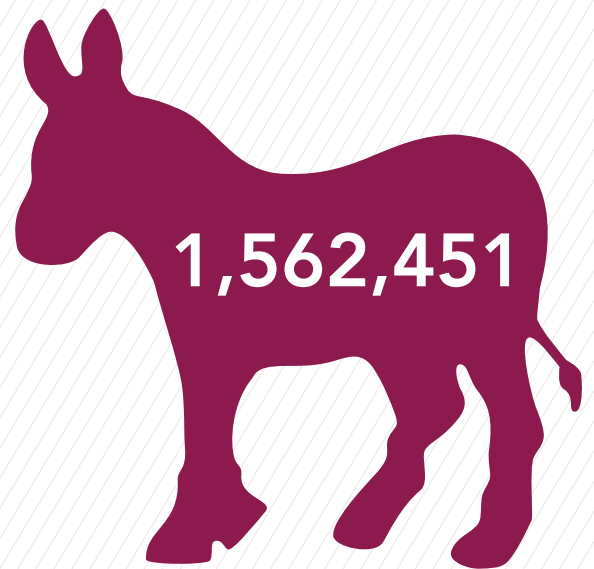


PRESIDENTS UNITED ON PURPOSE



Refugee arrivals during
Republican leadership



Refugee arrivals during
Democratic leadership

**DON'T DISRUPT THE 40 YEARS OF
UNWAVERING U.S. COMMITMENT
TO REFUGEE RESETTLEMENT**



U.S. COMMITTEE
FOR REFUGEES AND IMMIGRANTS

For more information:
refugees.org or 703-310-1130